

# Discussion Forum 2



**Mr. Mark Zirnsak**

*Senior Social Justice Advocate, Uniting Church of Australia  
Community Connections*

General information about the Community Connections Program

# Community Connections for PALM Workers

---

July 2024



# Who we are

The Salvation Army

Pacific Islands Council of Queensland

Pacific Islands Council of South Australia

Uniting Church in Australia Synod of  
Victoria and Tasmania

NSW Council for Pacific Communities



Uniting Church in Australia  
SYNOD OF VICTORIA AND TASMANIA



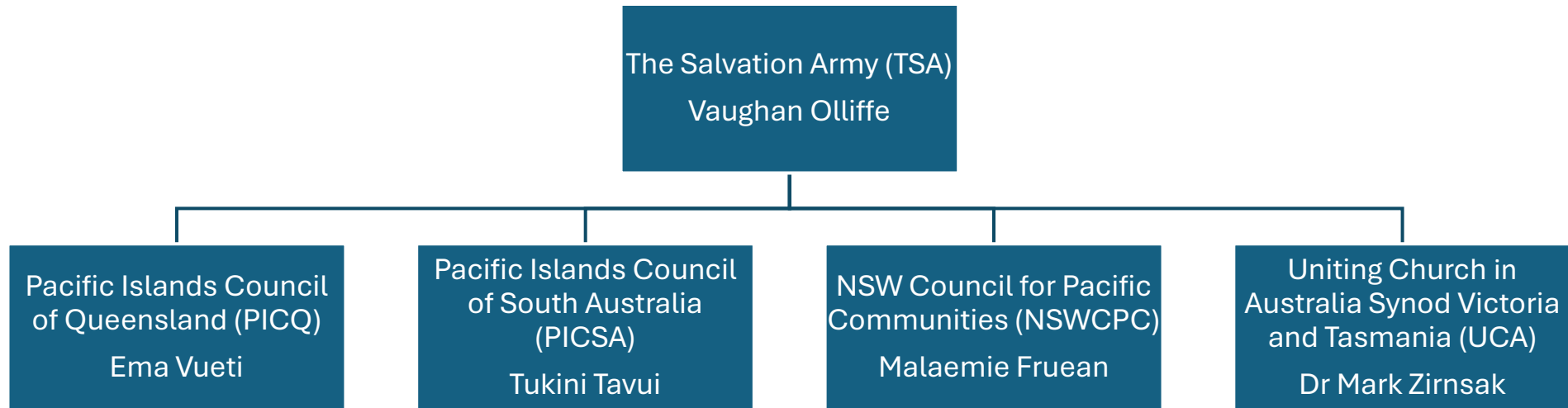
NSW COUNCIL FOR  
Pacific Communities



Pacific Islands Council Of  
South Australia  
*equip, empower, engage*



# Our Structure



# Our Goals

The change we expect to see from our activities:

Increased belonging and inclusion → decreased mistreatment and improved well-being and reduction in disengagement.

Through positive connection, we anticipate greater understanding and harmony between workers and their communities.

To address social disconnection from home communities that leads to problems like substance abuse.

## Goals

- To formalise and expand local connections for PALM workers;
- To enhance those connections by providing tools and resources to help communities reach and support workers.



# Our Strategy

- Engaging with local community groups/individuals, Approved Employers, local government and the Timorese with Pacific diaspora to bring PALM workers and their local communities together through social, sporting, cultural events and religious services;
- Employing community assessment techniques to identify and connect with additional stakeholders to ensure workers' welfare and wellbeing is supported;
- Collaborating with specialists with cultural, linguistic and technical expertise to produce resources for enhanced cultural understanding between workers and their host communities.

# Emergency Support Fund

- Fund is provided by the Department of Employment and Workplace Relations to provide support for workers in crisis situations, such as homelessness or unemployment.
- Only available to workers being redeployed within the PALM Scheme or those willing to depart Australia.
- It is not available to people who wish to stay in Australia and work illegally.
- Funds are short-term and must be approved by the Department.
- Funds are available for airfares to return home.
- Community Connections Partners can provide their own funding as well.

# Community Initiatives Fund

- Small grants of up to \$1,000 to assist local communities hold events and programs with people on the PALM Scheme.
- All applications will need to be approved by the Department.
- Previously, was provided by the Community Connections partners out of their grant allocations.
- The Department is formalising the process and at the moment no funds are available from the Community Connections funding.



# Contact

[CommunityConnections@salvationarmy.org.au](mailto:CommunityConnections@salvationarmy.org.au)



# 7TH AUSTRALIAN CATHOLIC MIGRANT AND REFUGEE OFFICE NATIONAL CONFERENCE 2024

## WELCOMING SEASONAL WORKERS IN AUSTRALIA: GIFT AND RESPONSIBILITY

**18-19 JULY 2024 | ACU MELBOURNE**

